

# Hydraulic Cylinder Replacement with Electric Rod-Style Actuator Application Worksheet

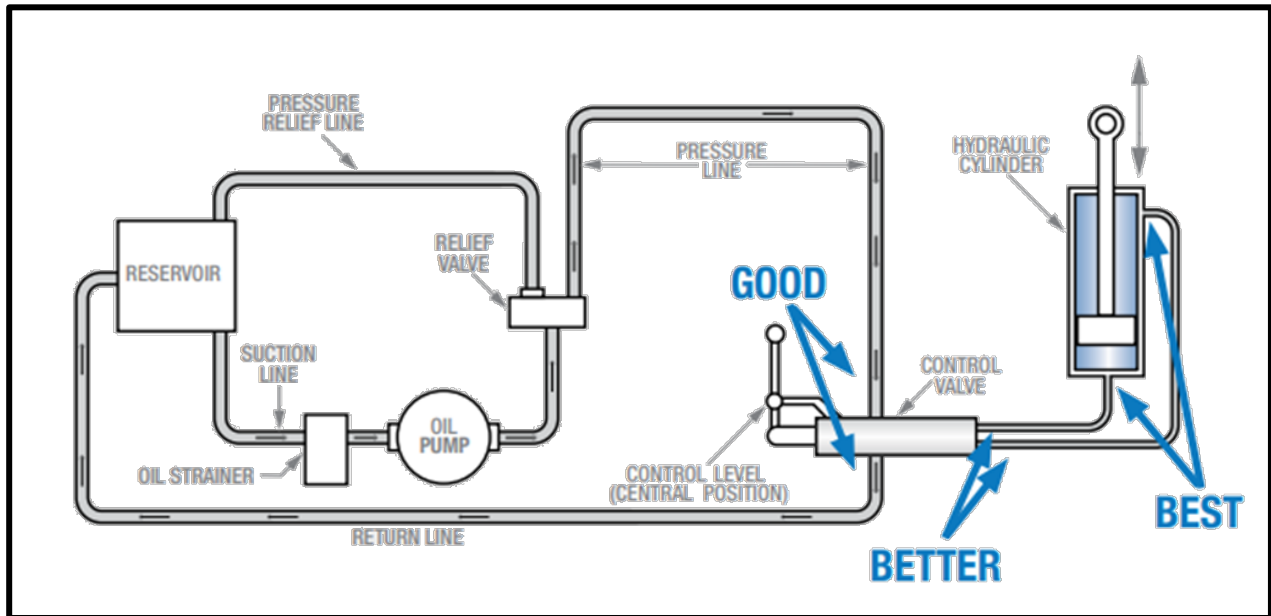
USE THE TOLOMATIC SIZING AND SELECTION SOFTWARE AVAILABLE ON-LINE AT [www.tolomatic.com](http://www.tolomatic.com)  
or call Tolomatic at 1-800-328-2174. We will provide any assistance needed to determine the proper actuator for the job.

## SYSTEM DETAILS

Please reference the Tolomatic [Hydraulic Replacement Ebook](#) for reference on methods to determine actuator needs. This worksheet will focus on the pressure method where pressures into and out of the cylinder are measured. It is also possible to use standard Electric Rod-Style sizing methods, but that typically requires more detailed application information than is available.

Video Recorded? ☐ Yes ☐ No      If yes, if possible please provide to Tolomatic for confirmation

Location of pressure taps: ☐ At Control Valve ☐ Between Control Valve and Cylinder ☐ At Cylinder ☐ System Pressure Only



Cylinder Bore Diameter: \_\_\_\_\_ ☐ inches ☐ millimeters

Rod Diameter: \_\_\_\_\_ ☐ inches ☐ millimeters

Stroke Length: \_\_\_\_\_ ☐ inches ☐ millimeters

Relevant Pictures:

--	--	--

## OPERATING PARAMETERS

System Pressure: \_\_\_\_\_ ☐ psi ☐ bar

Extend Working Pressure: \_\_\_\_\_ ☐ psi ☐ bar

Extend Back Pressure: \_\_\_\_\_ ☐ psi ☐ bar

Extend Move Time: \_\_\_\_\_ seconds

Retract Working Pressure: \_\_\_\_\_ ☐ psi ☐ bar

Retract Back Pressure: \_\_\_\_\_ ☐ psi ☐ bar

Retract Move Time: \_\_\_\_\_ seconds

Operating Environment (Describe Temperature, Contamination, Water, Etc.):

Additional Information:

Contact Information:

9900-4110

FAX 1-763-478-8080

**Tolomatic**<sup>™</sup>  
EXCELLENCE *IN MOTION*

EMAIL  
[help@tolomatic.com](mailto:help@tolomatic.com)